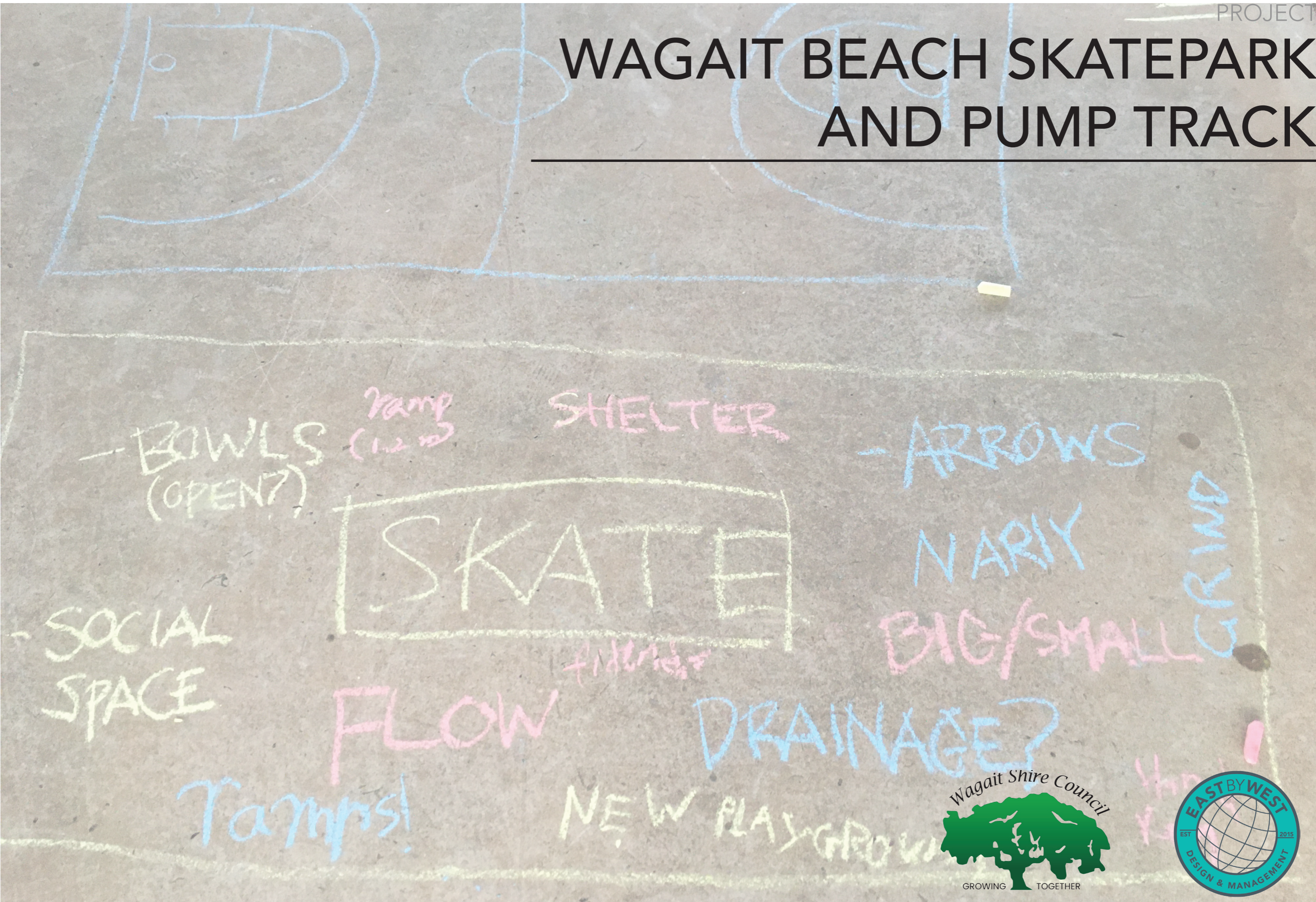


WAGAIT BEACH SKATEPARK AND PUMP TRACK



BOWLS (OPEN?)
Ramp (1.2 m)

SHELTER

ARROWS

NARIX

BIG/SMALL

GRIND

SOCIAL SPACE

SKATE

sidewalk

FLOW

DRAINAGE?

Ramps!

NEW PLAYGROUNDS

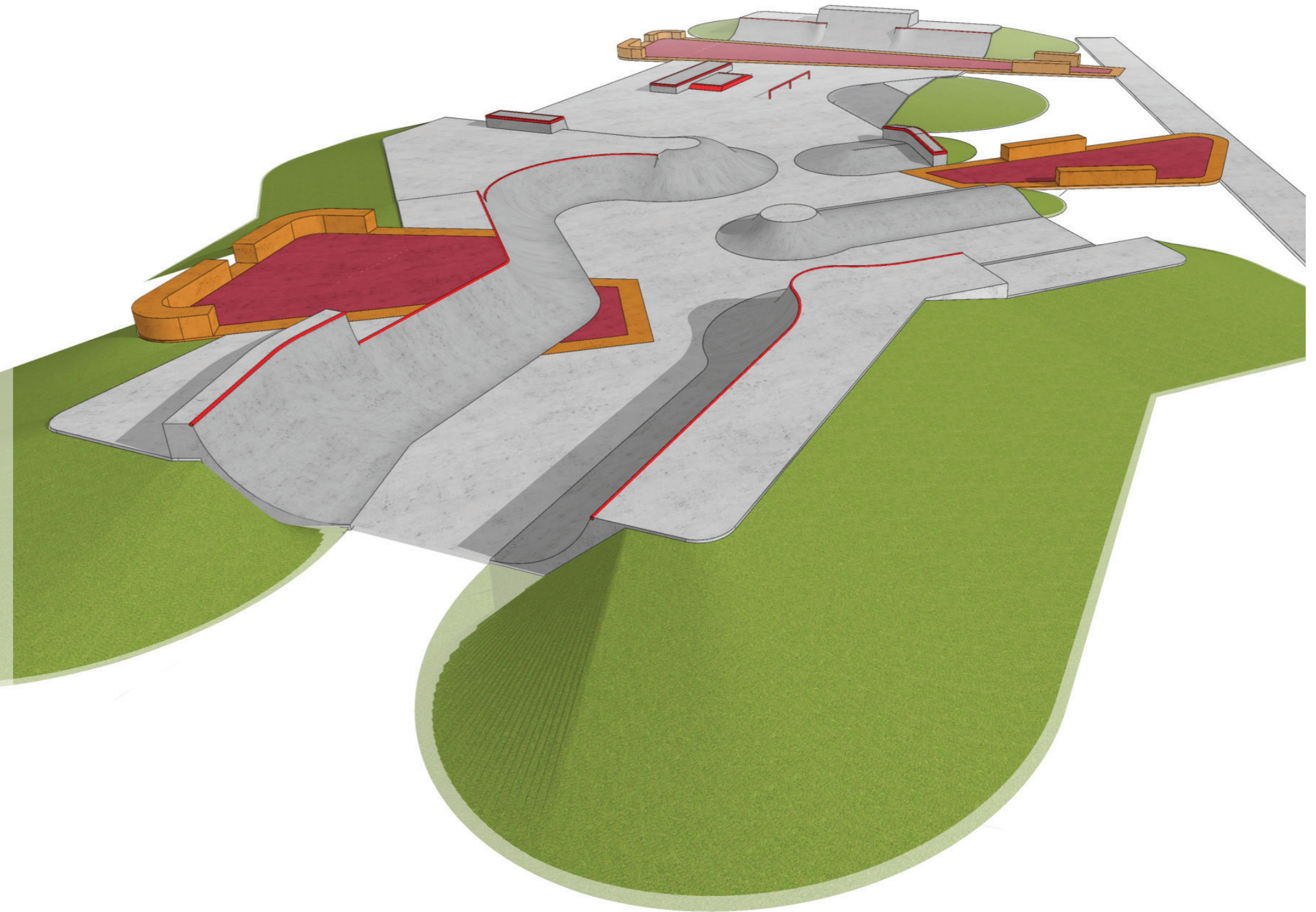


The Wagait Beach Skatepark and Pump track has been shaped by community consultation coupled with site conditions. Feedback from site and online workshops were for a space that fosters beginners, capacity for workshops, flow and ensuring it allows for progression. Passive users wanted a space that could support spectators to those that simply want to hang out.

The space features heights and orientation to ensure sight lines are maintained from the reserve access on Forsyth Road along with clear views from the rest of the reserve i.e. existing building and sporting courts. It integrates into the site rather than imposing itself. This minimal approach encourages active participation from its various entry points. The widened path along the existing tennis courts offers a central spine that directs users to the various spaces within the reserve. The connections are passive nodes that feature seating with the capacity to include shelter/s. Multiple refuge spaces have been proposed to break up the various social groups and alternative viewing opportunities. All existing vegetation has been maintained with the opportunity to include future planting to further soften and cool the space.

The skatepark has been designed with beginners to advanced users in mind. The first part of the skatepark (northern end) with a street focus has been intentionally designed to cater for workshops due to its open and simple layout. These elements have the ability to cater for all user types. Its layout allows simple back and forth use or to carve around, utilising the elements. The space leads into a 'flow area' that allows users to bounce between the elements, either remaining in this space or as a conduit between the adjoining spaces. Its non-prescribed nature encourages users to be creative. The southern end features a mini ramp section, a space for the intermediate to advanced users due its higher ramps. Its orientation retains the sight lines through the space and allows free drainage. Collectively the space can be utilised in its characterised zones or alternatively users can flow from one end to the other, engaging with the various types of elements along the way.

The pump track utilises the existing topography to offer a loop that is forever changing through its berms and options for connections. There will be hardstand between the skatepark and pump track to ensure a seamless link between the two spaces.



PROJECT
WAGAIT BEACH
PROJECT NUMBER
19022D
LOCATION
FORSYTH ROAD, WAGAIT BEACH

TITLE
CONCEPT DESIGN
DATE
16th SEPTEMBER 2022

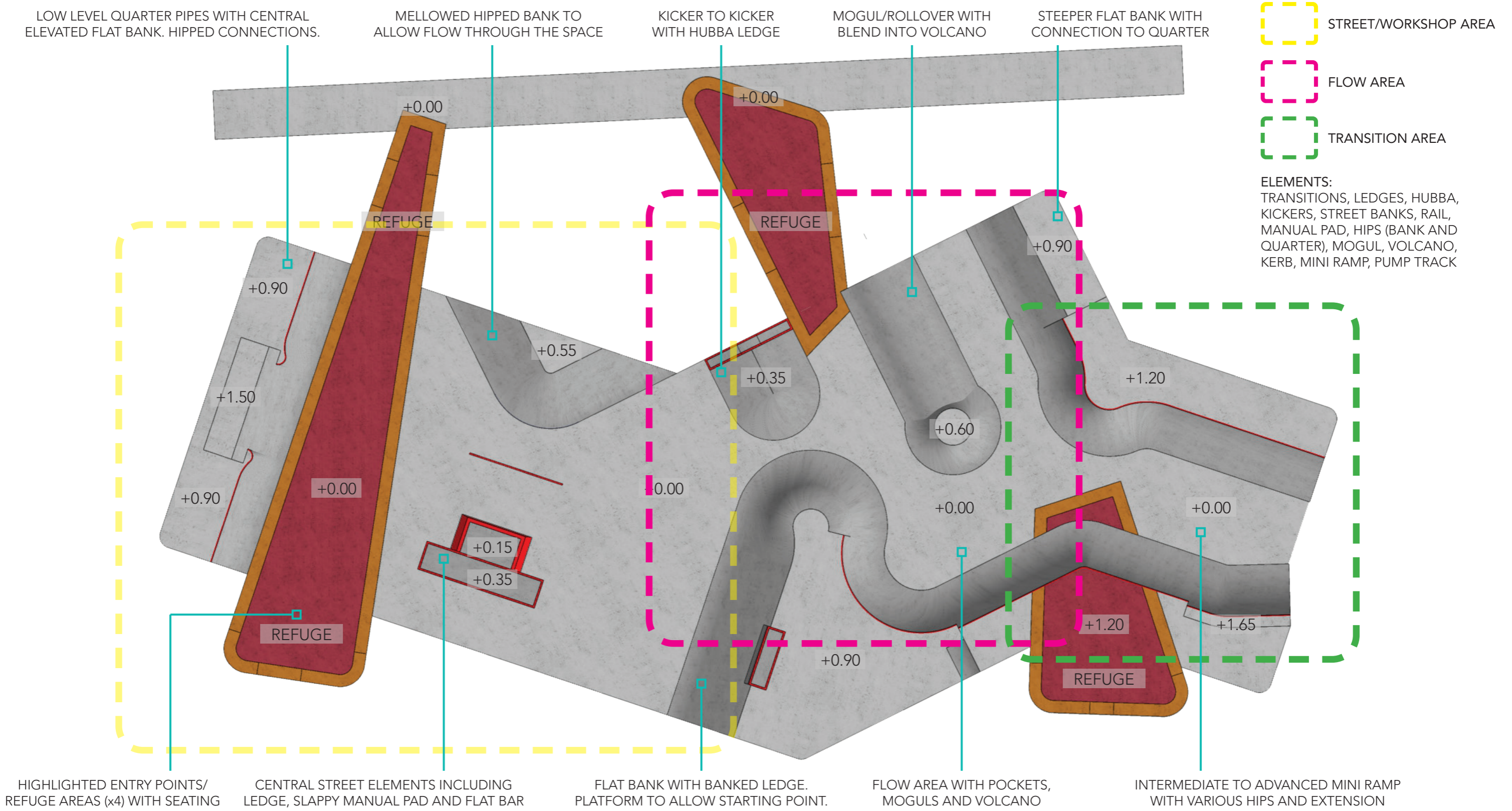
CLIENT



CONSULTANT



DETAILED PLAN VIEW



PROJECT
WAGAIT BEACH
 PROJECT NUMBER
 19022D
 LOCATION
 FORSYTH ROAD, WAGAIT BEACH

TITLE
CONCEPT DESIGN
 DATE
 16th SEPTEMBER 2022

CLIENT



CONSULTANT





PROJECT
WAGAIT BEACH
PROJECT NUMBER
19022D
LOCATION
FORSYTH ROAD, WAGAIT BEACH

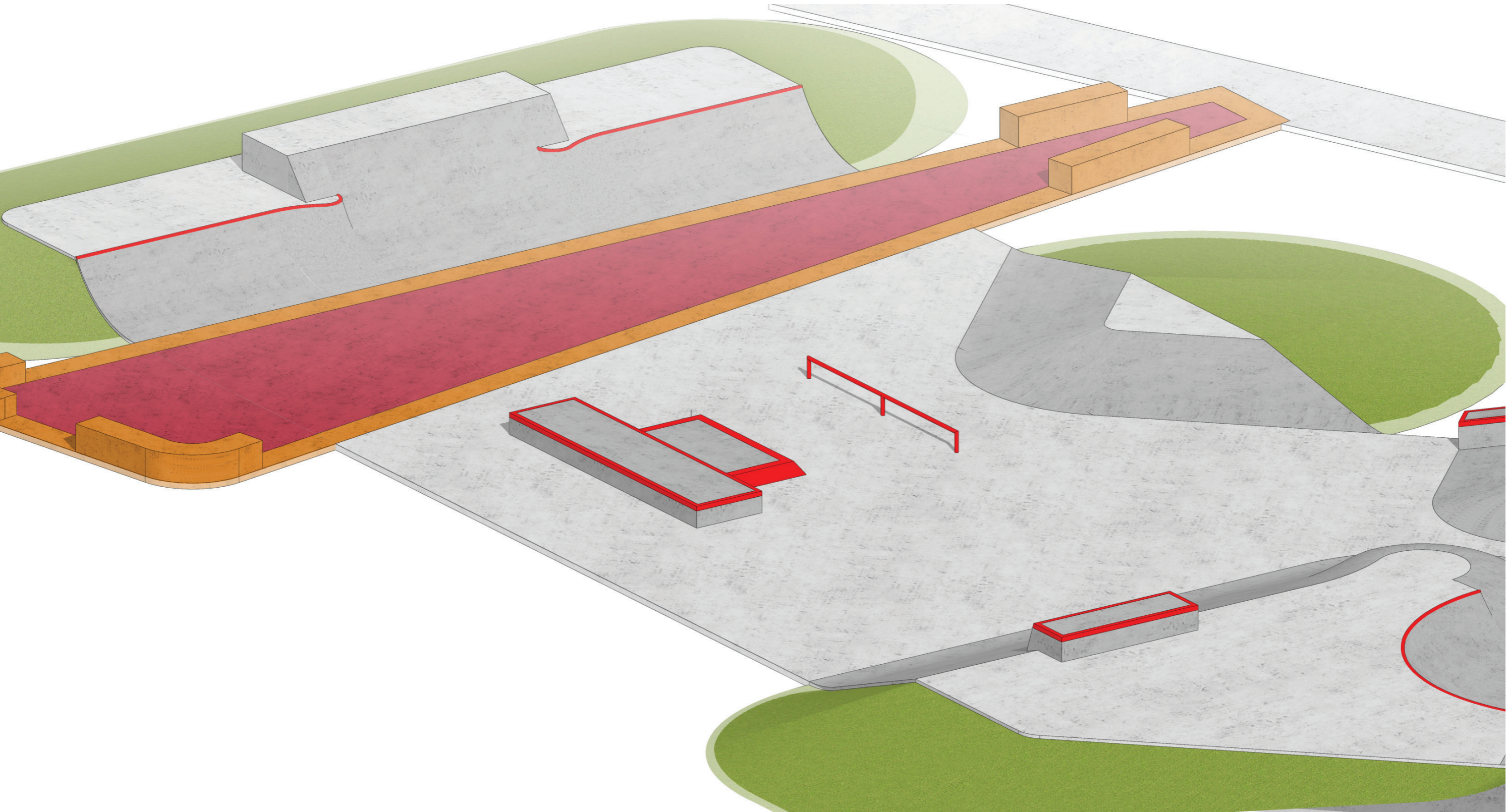
TITLE
CONCEPT DESIGN
DATE
16th SEPTEMBER 2022

CLIENT



CONSULTANT





PROJECT
WAGAIT BEACH
PROJECT NUMBER
19022D
LOCATION
FORSYTH ROAD, WAGAIT BEACH

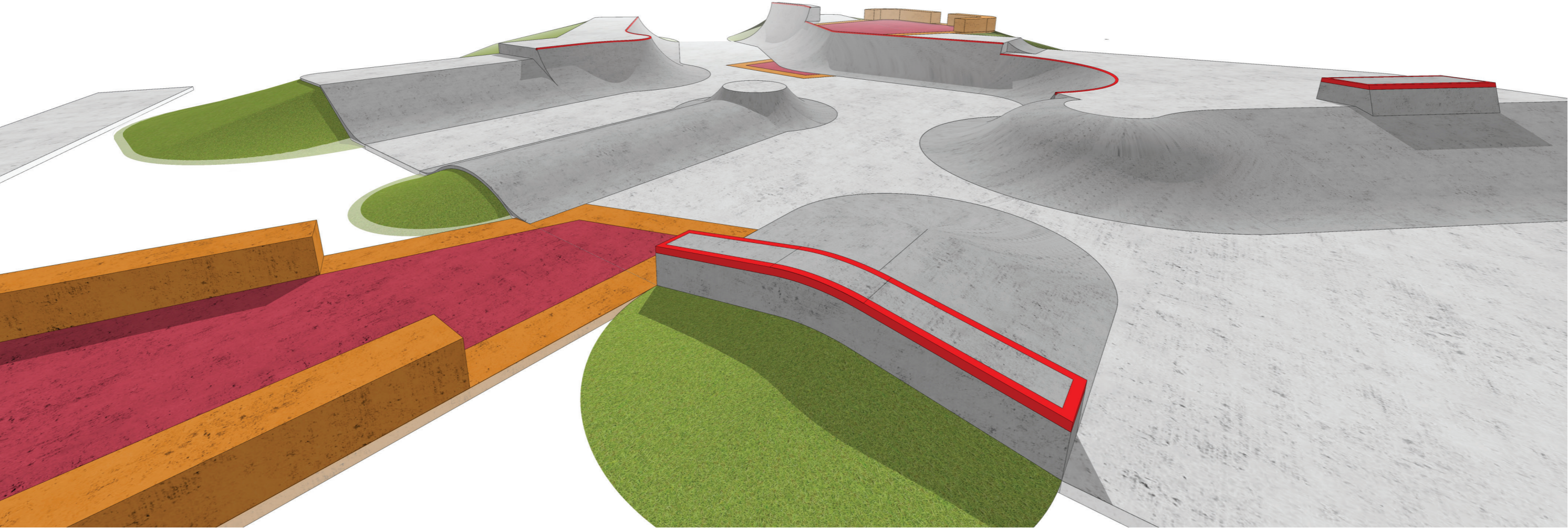
TITLE
CONCEPT DESIGN
DATE
16th SEPTEMBER 2022

CLIENT



CONSULTANT





PROJECT
WAGAIT BEACH
PROJECT NUMBER
19022D
LOCATION
FORSYTH ROAD, WAGAIT BEACH

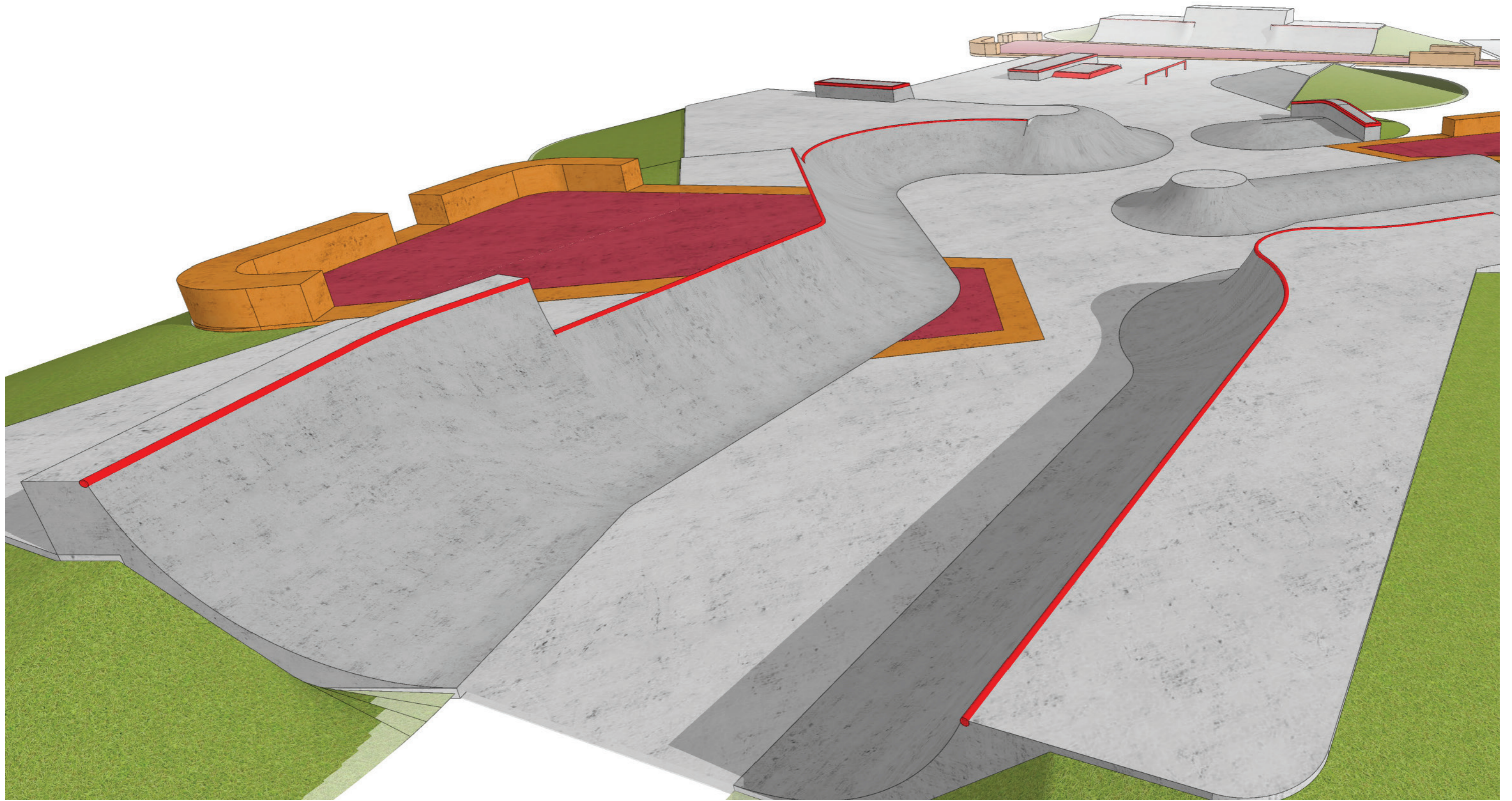
TITLE
CONCEPT DESIGN
DATE
16th SEPTEMBER 2022

CLIENT



CONSULTANT





PROJECT
WAGAIT BEACH
PROJECT NUMBER
19022D
LOCATION
FORSYTH ROAD, WAGAIT BEACH

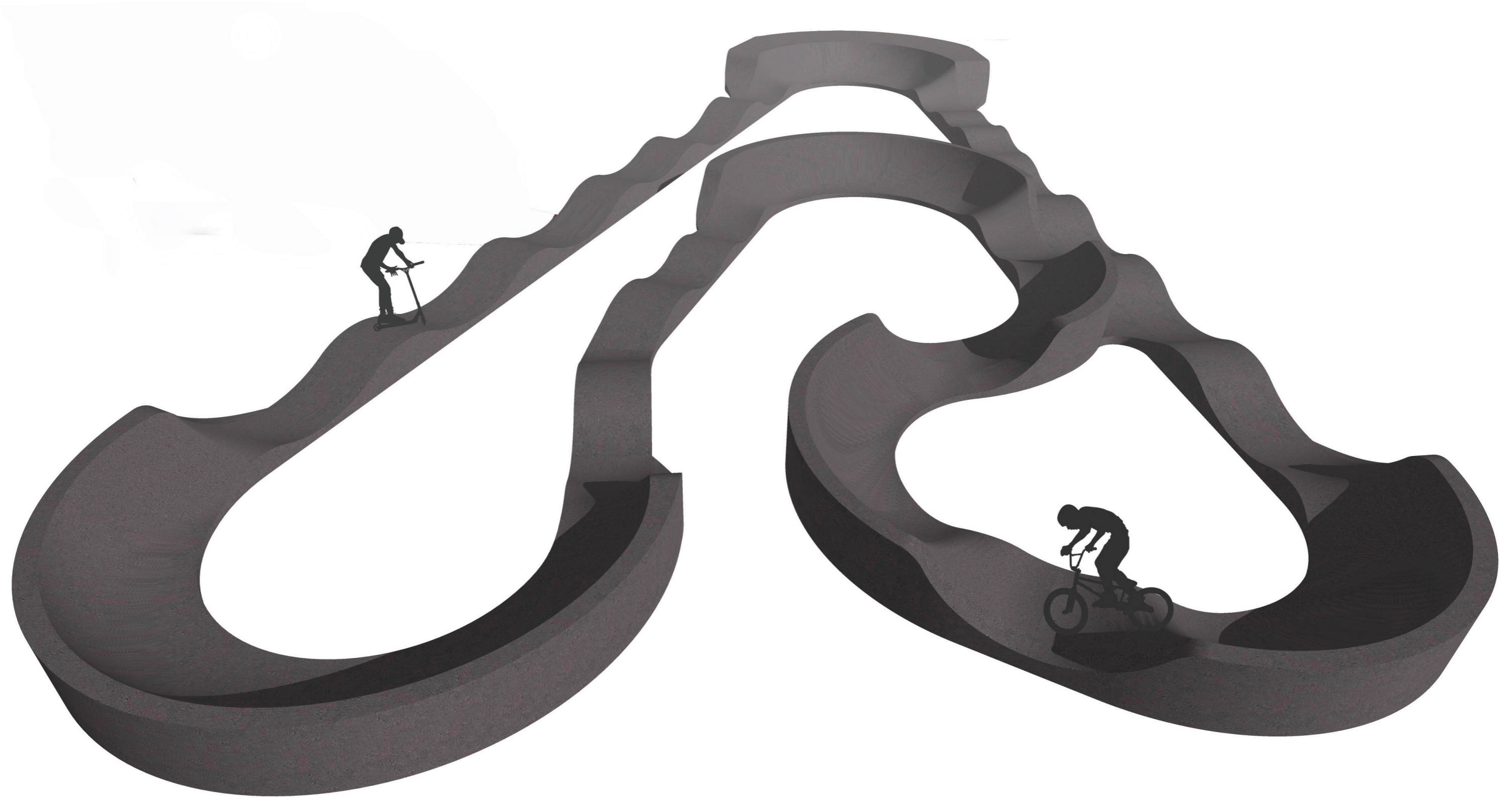
TITLE
CONCEPT DESIGN
DATE
16th SEPTEMBER 2022

CLIENT



CONSULTANT





PROJECT
WAGAIT BEACH
PROJECT NUMBER
19022D
LOCATION
FORSYTH ROAD, WAGAIT BEACH

TITLE
CONCEPT DESIGN
DATE
16th SEPTEMBER 2022

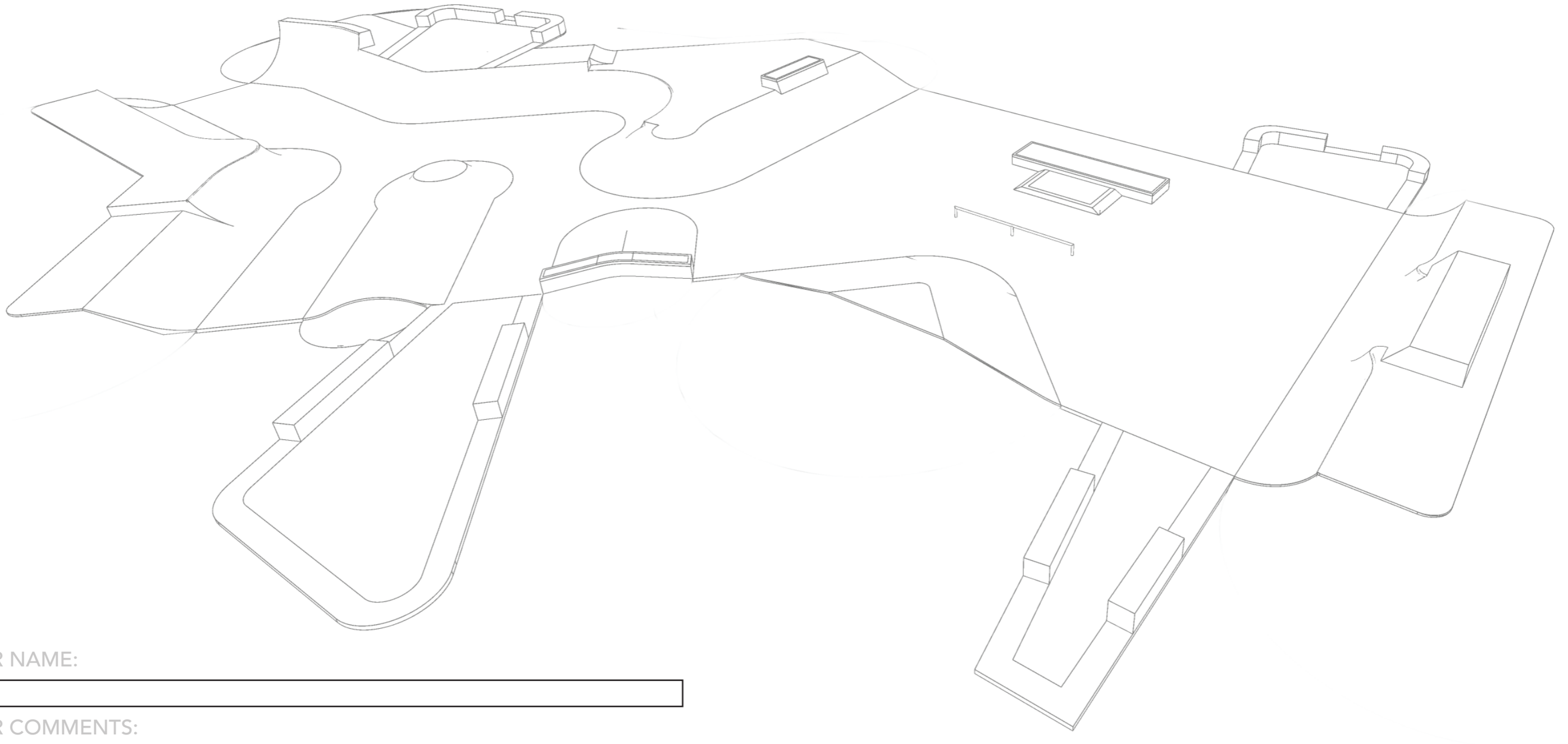
CLIENT



CONSULTANT



WAGAIT BEACH SKATEPARK - CONCEPT



YOUR NAME:

YOUR COMMENTS:

DRAW AND WRITE YOUR COMMENTS ON THIS PLAN

CLIENT



CONSULTANT





YOUR NAME:

YOUR COMMENTS:

DRAW AND WRITE YOUR COMMENTS ON THIS PLAN

CLIENT



CONSULTANT

